

Modern Management of Mitral Stenosis

Blase A. Carabello

Circulation. 2005;112:432-437

doi: 10.1161/CIRCULATIONAHA.104.532498

Circulation is published by the American Heart Association, 7272 Greenville Avenue, Dallas, TX 75231

Copyright © 2005 American Heart Association, Inc. All rights reserved.

Print ISSN: 0009-7322. Online ISSN: 1524-4539

The online version of this article, along with updated information and services, is located on the
World Wide Web at:

<http://circ.ahajournals.org/content/112/3/432>

Permissions: Requests for permissions to reproduce figures, tables, or portions of articles originally published in *Circulation* can be obtained via RightsLink, a service of the Copyright Clearance Center, not the Editorial Office. Once the online version of the published article for which permission is being requested is located, click Request Permissions in the middle column of the Web page under Services. Further information about this process is available in the [Permissions and Rights Question and Answer](#) document.

Reprints: Information about reprints can be found online at:
<http://www.lww.com/reprints>

Subscriptions: Information about subscribing to *Circulation* is online at:
<http://circ.ahajournals.org/subscriptions/>

Modern Management of Mitral Stenosis

Blase A. Carabello, MD

Although once rheumatic fever and its consequences were the major cause of valvular heart disease in the developed world, this disease has become exceedingly rare today. As a consequence, mitral stenosis (MS), which is usually caused by rheumatic fever, has also become rare. In fact, MS is most commonly found in the United States in patients who have emigrated here from areas where rheumatic fever is still endemic. Nonetheless, ≈ 1500 balloon mitral valvotomies (BMVs) were performed in the United States last year, which provides a rough index of severe disease prevalence. The following is a review of the current understanding and management of this disease.

Etiology

Although the attack rate for rheumatic fever is roughly equal among genders, MS is 2 to 3 times more common in women. It is generally believed that the M protein antigen held in common between the heart and group A hemolytic *Streptococcus* results in an autoimmune attack of the heart in response to streptococcal infection.¹⁻³ What factors cause susceptibility to the illness remain unclear. Likewise, factors responsible for the decline in MS incidence in developed countries are also obscure. Although the decline may be due in part to the introduction of antibiotics, a fall in the attack rate of rheumatic fever began well before antibiotics were widely available.⁴

Once begun, the rheumatic process leads to inflammation in all 3 layers of the heart: endocardium, myocardium, and pericardium. However, the disease primarily affects the endocardium, leading to inflammation and scarring of the cardiac valves. Although the process is punctuated by acute episodes of rheumatic fever, chronic inflammation and scarring continue well after the last attack, leading to severe valve damage years later. The mechanism of this chronic process is debatable and is thought to be due either to a continuing low-grade rheumatic process or to hemodynamic stresses on the now-injured valve. Elevated C-reactive protein levels, indicative of ongoing generalized inflammation, are found in many patients before BMV, which supports an inflammatory origin for MS.⁵ Although all of the cardiac valves may be involved by the rheumatic process, the mitral valve is involved most prominently and in virtually all cases. Stenosis of this valve occurs from leaflet thickening, commissural fusion, and chordal shortening and fusion.

Occasionally, mitral annular calcification rather than disease of the valve leaflets and chordae tendineae is the cause of mitral stenosis. Annular calcification appears to be closely related to aortic and aortic valve calcification, which have recently been associated with atherosclerosis rather than with rheumatic fever.⁶ Other exceedingly rare causes of MS include use of anorectic drugs and carcinoid syndrome.

Pathophysiology

The normal mitral valve orifice is 4 to 5 cm², which essentially creates a common chamber between left atrium and left ventricle in diastole. In very early diastole, there is a brief, small gradient between left atrium and left ventricle, which rapidly dissipates (Figure 1A) so that pressure in the 2 chambers is equal for most of the filling.⁷ As the mitral orifice narrows in MS, it curtails free flow of blood from left atrium to left ventricle, and a pressure gradient develops between the 2 chambers (Figure 1B).⁷ This pressure gradient is added on to left ventricular diastolic pressure, which results in increasing left atrial pressure that eventually leads to left atrial enlargement and pulmonary congestion. As stenosis severity worsens, flow restriction limits left ventricular output. Pulmonary congestion and reduced cardiac output mimic left ventricular failure. Although it is generally believed that left ventricular contractility is normal in most cases of MS, the issue of a "myocardial factor," ie, left ventricular damage cause by rheumatic fever, has often been raised without unanimity.⁸⁻¹⁰ Although ejection phase indexes of left ventricular function are reduced in approximately one third of patients with MS, decreased preload from impaired filling and increased afterload secondary to reflex vasoconstriction (secondary to reduced cardiac output) are usually the causes of reduced left ventricular function rather than impaired contractility.¹¹ However, in developing nations where rheumatic inflammation appears to be very aggressive, true contractile impairment may be present.

Because it is primarily the right ventricle that generates the force necessary to drive blood across the stenotic mitral valve, MS causes right ventricular pressure overload. In severe MS, pulmonary vasoconstriction in addition to left atrial hypertension produces severe pulmonary hypertension, which leads to right heart failure.

From Baylor College of Medicine, Department of Medicine and the Veterans Affairs Medical Center, Houston, Tex.

Correspondence to Blase A. Carabello, MD, Baylor College of Medicine, Department of Medicine and the Veterans Affairs Medical Center, 2002 Holcombe Blvd, Houston, TX 77030. E-mail blaseanthony.Carabello@med.va.gov

(*Circulation*. 2005;112:432-437.)

© 2005 American Heart Association, Inc.

Circulation is available at <http://www.circulationaha.org>

DOI: 10.1161/CIRCULATIONAHA.104.532498

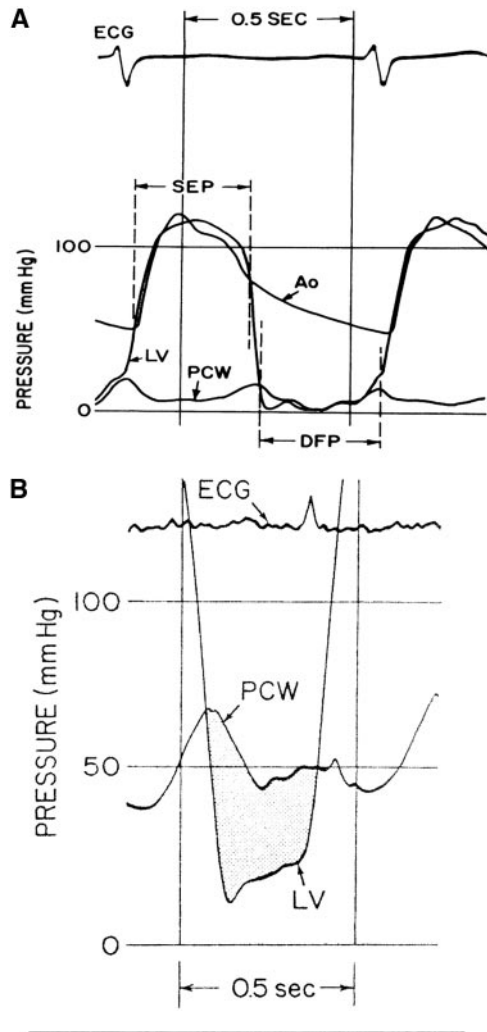


Figure 1. A, Normal left ventricular (LV), left atrial, and aortic (Ao) pressure tracings are shown. DFP indicates diastolic filling period; SEP, systolic ejection period. Taken from Carabello and Grossman⁷ with permission. B, Pressure gradient between pulmonary capillary wedge pressure (PCW) and left ventricle (LV) is shown for patient with MS. In this figure, left ventricular end-diastolic pressure is atypically elevated, consistent with coincident mitral regurgitation. Reproduced from Carabello and Grossman⁷ with permission.

Diagnosis

History and Physical Examination

In mild disease (Table 1), the patient may be entirely asymptomatic. With worsening stenosis, the symptoms of dyspnea on exertion, orthopnea, and paroxysmal nocturnal dyspnea occur, although many patients may remain asymptomatic despite very high left atrial pressure. Lymphatic hyperfunction in such patients may help prevent pulmonary congestion and its attendant symptoms.¹² Increasing left atrial pressure may result in hemoptysis as pulmonary venous hypertension results in rupture of anastomoses between bronchial veins. The enlarged left atrium may impinge on the left recurrent laryngeal nerve, causing hoarseness (Ortner's syndrome). In some patients, the new onset of atrial fibrillation (AF) may be the first clue that MS is present. In other patients, the physiological stress of pregnancy may cause symptoms for the first time.

The physical examination of the patient with MS is characteristic and usually diagnostic. In advanced disease, the pulse pressure may be reduced, which indicates reduced stroke volume. There may be typical "mitral" facies with plethoric cheeks punctuated by bluish patches, a condition probably related to impaired cardiac output. Neck vein elevation is seen if there is right heart failure. Lung examination may demonstrate rales.

Cardiac examination finds a right ventricular lift if pulmonary hypertension has developed. A diastolic thrill may be palpated in the left lateral decubitus position. There is increased intensity of the S_1 that occurs because the transmittal gradient holds the mitral valve open for all of diastole, so that ventricular systole closes the mitral valve from a long moment arm. In far-advanced disease, S_1 may become soft because the valve is so diseased it neither opens nor closes well. The pulmonic component of the second sound will be increased in intensity if pulmonary hypertension is present. After S_2 , the mitral valve opens with a snap. The distance from S_2 to the opening snap is a good clue to MS severity. The higher the left atrial pressure (and the more severe the stenosis), the sooner the mitral valve opens. An S_2 -opening snap interval <0.08 seconds usually indicates severe disease. A low-pitched mitral rumble follows the opening snap and may be punctuated by presystolic accentuation if the patient is in sinus rhythm. A high-pitched blowing murmur (Graham Steell) may be heard at the cardiac base. Although often this murmur is thought to be secondary to the pulmonic regurgitation of pulmonary hypertension, in reality the murmur is more often due to concomitant aortic regurgitation.¹³ In patients with pulmonary hypertension, other findings may include a tricuspid murmur, hepatomegaly, ascites, and edema.

Although physical examination of the patient with MS should lead to the correct diagnosis, as with many heart diseases, diagnostic errors are not uncommon. The presence of AF with a rapid ventricular response may obscure the cardiac findings. A soft murmur from low cardiac output may be missed until it is made obvious with hand-grip exercise. Left atrial myxoma tricuspid stenosis and even atrial septal defect may be confused with MS.

Laboratory Diagnosis

Although the ECG and chest radiograph provide support for the diagnosis of MS, today the echocardiogram forms the diagnostic mainstay (Figure 2). Echocardiography is used to establish the anatomy of the valve, confirming a typical "rheumatic" or "hockey stick" appearance. Stenosis severity is determined in 3 ways. First, the valve area can be planimetered directly.¹⁴ Second, Doppler interrogation of the valve can establish the pressure gradient, where $\text{gradient} = 4v^2$ and $v = \text{transmitral flow velocity}$.¹⁵ Third, valve area may be obtained by the pressure half-time technique.¹⁶ This empirical device divides the constant 220 by the time it takes for transmitral flow velocity to decrease from peak velocity to that velocity divided by the square root of 2. The more severe the MS, the slower the emptying into the left ventricle and the longer the pressure half-time will be, which enlarges the denominator and reduces the calculated valve area.

Suitability of valve anatomy for BMV is also assessed during echocardiography. In addition, disease of the other cardiac valves, pulmonary artery pressure (in the presence of even mild

TABLE 1. Grades of MS Severity

Severity	MVA, cm ²	Gradient, mm Hg	PAP	Symptoms	Signs	Therapy
Mild	>1.8	2–4	Normal	Usually absent	S ₂ -OS >120 ms; normal P ₂	IE prophylaxis
Moderate	1.2–1.6	4–9	Normal	Class II	S ₂ -OS 100–120 ms; normal P ₂	IE prophylaxis; diuretics
Moderate to severe	1.0–1.2	10–15	Mild pulmonary HTN	Class II–III	S ₂ -OS 80–100 ms; P ₂ increase	IE prophylaxis; BMV if applicable or surgery if more than mild Sx
Severe	<1.0	>15	Mild to severe pulmonary HTN	Class II–IV	S ₂ -OS <80 ms; P ₂ increase; RV lift Sx if R heart fails	IE prophylaxis; BMV or surgery

MVA indicates mitral valve area; PAP, pulmonary artery pressure; OS, opening snap; IE, infective endocarditis; HTN, hypertension; Sx, symptoms; and RV, right ventricular.

tricuspid regurgitation),¹⁷ and left ventricular function are all assessed during echocardiography.

In some cases in which the noninvasive data and clinical presentation are discordant, cardiac catheterization may be necessary to resolve the issue of stenosis severity. Cardiac output and transvalvular gradient measurements are used to calculate valve area with the Gorlin formula to reassess stenosis severity.¹⁸ In most cases, the pulmonary capillary wedge pressure is substituted for left atrial pressure. Although debated, when properly confirmed oximetrically, pulmonary capillary wedge pressure is a reliable surrogate for left atrial pressure.¹⁹ Most commonly, discordance between clinical and noninvasive data occurs when the patient's symptoms seem more severe than the degree of stenosis found during echocardiography would warrant. In such cases, hemodynamic measurements during exercise may be quite revealing. It often occurs that left atrial and pulmonary artery pressures that are only modestly elevated at rest become dramatically elevated during exercise, which in turn explains the patient's symptoms. In such cases, relief of the MS may be quite rewarding even though valve area was calculated to be only in the mild to moderately severe range.

In most MS patients who have developed pulmonary hypertension, pulmonary pressures fall soon after relief of the MS because left atrial pressure falls and because elevated pulmonary vascular resistance is usually due to reactive vasoconstriction as opposed to permanent histopathologic changes.²⁰ However, in a minority of MS patients, pulmonary hypertension is fixed. Recent reports suggest that the response of pulmonary artery pressure to inhalation of nitric oxide during cardiac catheterization can be useful to divorce fixed from reversible pulmonary hypertension.²¹

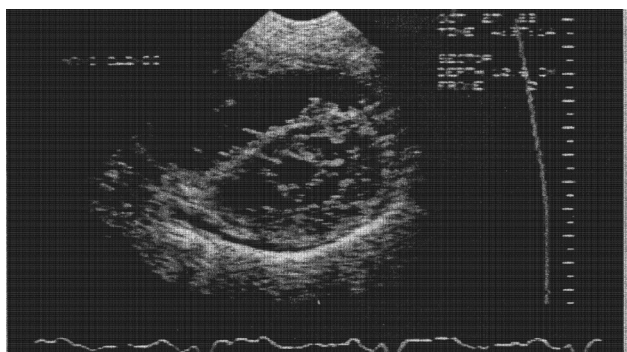


Figure 2. Echocardiogram from patient with MS.

Medical Therapy

The medical therapies for patients with MS in sinus rhythm are relatively limited. In general, all patients with MS should undergo appropriate antibiotic prophylaxis against infective endocarditis for those procedures known to cause bacteremia. Diuretics are useful for treating mild symptoms.

AF commonly accompanies MS and is more related to age than to stenosis severity. When AF occurs acutely, it is often associated with a rapid ventricular response. Because increased heart rate primarily reduces time in diastole, the arrhythmia causes further impairment in left ventricular filling, which leads to abrupt left atrial hypertension and reduced cardiac output. Immediate rate control is imperative and can be effected by administration of β -blockers or rate-affecting calcium channel blockers. If these therapies are ineffective in controlling rate and the patient is unstable, immediate DC cardioversion is indicated.

The patient with MS in chronic AF is at risk of embolic stroke (at a rate of between 7% and 15% per year).²² Accordingly, all such patients require warfarin anticoagulation with a target international normalized ratio of 2.5 to 3.5. After a first embolic event, the recurrence rate is increased \approx 2-fold without anticoagulation. Chronic rate control for such patients is usually maintained with the use of digoxin, a β -blocker, a calcium channel blocker, or some combination of these agents. Adequacy of rate control should be monitored not only at rest but also during activity, because in many patients, apparently adequate rate control at rest belies tachycardia with even mild activity. Such patients are at risk for developing tachycardia-induced cardiomyopathy.²³

Mechanical Relief of Obstruction

Because MS is a mechanical obstruction to forward flow, the only definitive therapy is mechanical relief of this obstruction. Three procedures are effective in providing such therapy. These are BMV, open commissurotomy, and mitral valve replacement. Because clinical trials have found BMV to be superior to closed surgical commissurotomy, the latter procedure has been largely abandoned except in areas where it is less expensive to perform closed commissurotomy than BMV.^{24–26}

Timing of Mechanical Intervention

As with all valvular heart disease, no randomized trials have been performed to ascertain the best timing of intervention; rather, timing has been derived from the relatively scanty observational data that exist. As shown in Figure 3, the more

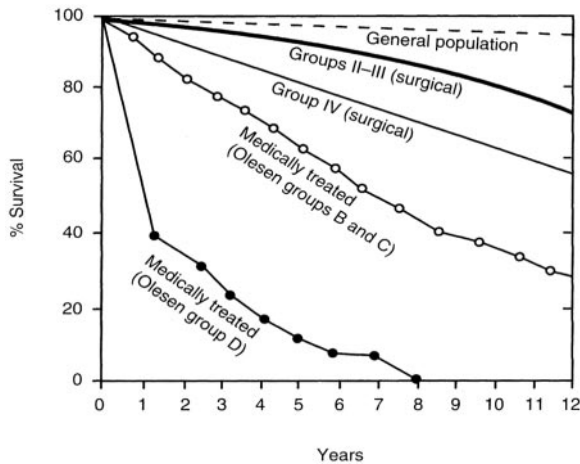


Figure 3. Survival according to therapy and symptomatic status for patients with MS. Groups II, III, and IV are roughly equivalent to groups B, C, and D, respectively. Reproduced from Roy and Gopalanath²⁷ with permission.

advanced the patient's symptoms, the greater the survival advantage with mechanical relief of obstruction (surgical commissurotomy in this figure) compared with medical therapy.²⁷ Thus, it seems reasonable to provide mechanical relief once more than mild symptoms are present. Furthermore, as shown in Figure 4, when pulmonary hypertension has developed, surgical risk is excessive²⁸ (12% versus the usual 3% to 8% reported in most studies). Thus, it appears unwise to permit pulmonary hypertension to go uncorrected regardless of symptomatic status. Timing of intervention is typically a bit earlier in good candidates for BMV, a nonsurgical procedure with a very low morbidity and mortality in experienced hands compared with open heart surgery. On the other hand, if it appears that mitral valve replacement will be required, its higher risks usually delay surgery until a bit later in the course of the disease.

Balloon Mitral Valvotomy

During BMV, a large balloon is introduced across the mitral valve via either the transseptal or retrograde route. Inflation of the balloon fractures the rheumatic fusion of the valve leaflets at the commissures, dramatically improving leaflet excursion and orifice area. Successful BMV is usually defined as a postprocedure mitral valve area of >1.5 cm² with no more than moderate

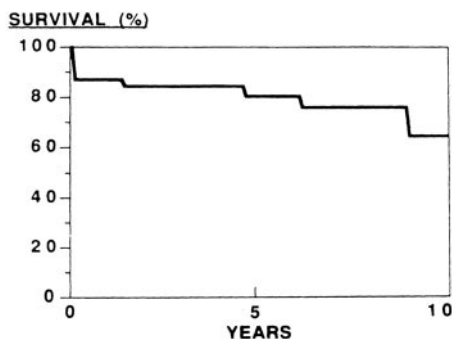


Figure 4. Outcome of surgery for MS patients with pulmonary hypertension. High operative risk is demonstrated. Reproduced from Vincens et al²⁸ with permission.

mitral regurgitation. In fact, postprocedure mitral valve area is usually close to 2.0 cm² in many reported studies.^{29,30} Randomized trials comparing BMV to closed commissurotomy show it to be superior to closed commissurotomy, providing an often larger valve area and exhibiting excellent long-term durability.^{24,25} Sixty-five percent of patients are free of restenosis 10 years after the procedure.³¹ Recently, encouraging results have been reported with the use of a reusable metallic valvulotome.³² Reuse of the device is helpful in reducing the cost of the procedure.

Suitability for BVM is determined by valve morphology and the amount of mitral regurgitation present. The Wilkins score gives a rough guide to the suitability of the mitral valve's morphology for BMV.³³ This scoring system assigns a point value from 1 to 4 for each of (1) valve calcification, (2) leaflet mobility, (3) leaflet thickening, and (4) disease of the subvalvular apparatus. In general, patients with a score of <9 and less than moderate mitral regurgitation have the best outcomes, although many patients have benefited from BMV despite higher valve scores.³⁴ Thus, in most patients with high scores, a surgical approach is advisable; however, in patients with serious comorbidities for whom surgery seems ill advised, BMV may still provide benefit.

Before BMV, a transesophageal echocardiogram is performed in all patients to look for the presence of clot (an obvious risk for embolization) in the left atrium or left atrial appendage. If thrombus is found, BMV is abandoned, and the patient is begun on warfarin therapy for several months, at which time a repeat transesophageal echocardiogram is performed. If the thrombus has disappeared, BMV can then be attempted.

Open Commissurotomy

Recent emphasis on mitral valve conservation may lead to increased use of this procedure, wherein the surgeon, under direct vision, may be able to provide relief of obstruction in patients thought not to be BMV candidates because of poor valve morphology. Exactly what percentage of patients would likely have a bad outcome with BMV yet a good outcome with open commissurotomy is unknown but probably is small. However, when the valve can be conserved, it avoids the risks inherent to prosthetic valves and also avoids the need for anticoagulation in patients in sinus rhythm.

Mitral Valve Replacement

In cases in which rheumatic involvement of the valve precludes conservation, mitral valve replacement must be performed. The operative risk is 3% to 8% in the absence of pulmonary hypertension and other comorbidities.³⁵ The choice of prosthesis is based on patient age, the risk of anticoagulation, and patient and surgeon preference. Table 2 presents the utility of the different valve procedures for MS.

Special Issues

Atrial Fibrillation

AF occurs commonly in MS, affecting $\approx 40\%$ of all patients. Rheumatic AF appears different in pathophysiology from this arrhythmia in nonrheumatic disease. In nonrheumatic AF, increased atrial size and pressure are usually invoked as major factors in initiating the arrhythmia. As such, maneuvers to decrease left atrial size might be effective in preventing or

TABLE 2. Mechanical Therapy for MS

Procedures	Indications	Contraindications	Advantage	Disadvantages
BMV	Sx; MVA <1.5 cm ² with good valve score. Pulmonary HTN, MVA <1.5 cm ² with good valve score. Sx or pulmonary HTN + high-risk surgery and any valve score.	MVA >1.5 cm ² LA thrombus More than moderate MR	Percutaneous	Reduced applicability with poor valve morphology
Open commissurotomy	Sx, MVA <1.5 cm ² ; pulmonary HTN with MVA <1.5 cm ²	MVA >1.5 cm ²	Avoids prosthetic valve	Limited applicability
Mitral valve repair	Sx, MVA <1.5 cm ² or pulmonary HTN with MVA <1.5 cm ²	MVA >1.5 cm ²	Applicable when BMV and open commissurotomy fail	All the risks of a prosthesis

MVA indicates mitral valve area; HTN, hypertension; Sx, symptoms; LA, left atrial; and MR, mitral regurgitation.

reverting the arrhythmia. However, in MS, although there is a correlation of AF with left atrial size, early BMV has not been universally successful in preventing AF.³⁶ This discrepancy probably stems from the multifactorial nature of AF in MS. It is likely that persistent rheumatic inflammation and left atrial fibrosis contribute in addition to left atrial size and left atrial hypertension as causes of AF in MS. As such, early intervention for the purpose of forestalling or reverting AF is less likely to be as successful as it might be in nonrheumatic mitral regurgitation.

It is generally recognized that AF predisposes to thromboembolic complications that are usually thought to be caused by stasis and lack of left atrial contraction. Although this concept is almost certainly correct, the risk of thromboembolism in MS is also contributed to by a hypercoagulable state.³⁷ Interestingly, this hypercoagulable state is improved after BMV and also with rate control.^{37,38}

Pregnancy

As noted above, MS is primarily a disease of women, in whom the pathophysiology is often exacerbated by the physiological demands of pregnancy. During the second trimester, cardiac output increases by ≈70%. Because transvalvular gradient increases by the square of cardiac output,¹⁸ a 1.7-fold increase in output causes an increase in resting transmitral gradient by a factor of 2.89. Thus, a modest prepregnancy resting transmitral gradient of 4 mm Hg might become 12 mm Hg during pregnancy, resulting in a left atrial pressure of 25 mm Hg, in turn causing cardiac symptoms. In general, the rule of 1 class is valid: that is, during pregnancy, the patient's symptomatic status will increase by 1 New York Heart Association class. For pregravid patients in class I, pregnancy poses few problems; however, for more symptomatic patients, pregnancy may cause serious clinical difficulties. Mild symptoms may be managed with the use of diuretics. However, in advanced disease, relief of MS during pregnancy may be advisable. A substantial number of patients benefited by BMV during pregnancy have been reported.³⁹ Although the exact indications for BMV during pregnancy are not clear-cut, it seems wise to proceed with BMV when the pregnant patient is obviously failing medical therapy. Alternatively, it might be wise to provide BMV before pregnancy in symptomatic women or in women who already have asymptomatic pulmonary hypertension, although firm guidelines for such therapy have not been established.

Concomitant Valve Disease

As noted above, rheumatic fever may involve all of the cardiac valves. Most commonly, MS is accompanied by aortic regurgitation. Because the presence of MS reduces cardiac output (and thus aortic flow), the copresence of MS blunts the usual presentation of aortic regurgitation.⁴⁰ For any given severity of aortic regurgitation, MS reduces expected cardiac dilatation, stroke volume, and the physical signs caused by those factors, leading the clinician to underestimate aortic regurgitation severity both clinically and during echocardiography. In such cases, quantitative echocardiography-Doppler studies and/or cardiac catheterization may be necessary to resolve the issue. In symptomatic patients for whom valve surgery is contemplated, double-valve replacement carries increased risk compared with single-valve replacement. Therefore, it is advantageous, when possible, to perform BMV first and then perform aortic valve replacement.⁴¹

Tricuspid regurgitation also frequently accompanies MS. In most cases, tricuspid regurgitation results from right ventricular dilatation secondary to the pulmonary hypertension that complicates MS. As such, mild to moderate tricuspid regurgitation usually improves after correction of the MS.⁴² However, if severe tricuspid regurgitation exists or if there is anatomic deformity of the tricuspid valve, surgical intervention for tricuspid regurgitation is usually necessary. Correction of tricuspid regurgitation is usually afforded by ring annuloplasty at the time of mitral surgery.

Summary

MS is usually caused by rheumatic fever, a disease rare in developed countries today but that still persists in a large part of the world. When complicated by AF, rate control and anticoagulation are mandatory in the absence of pressing contraindications. Once more than mild symptoms exist or once asymptomatic pulmonary hypertension occurs, mechanical relief of MS is indicated. In most cases, such relief is provided by the durable commissurotomy created at BMV. In other cases, surgical correction is needed. After these interventions, prognosis is excellent.

References

1. Bessen D, Jones KF, Fischetti VA. Evidence for two distinct classes of streptococcal M protein and their relationship to rheumatic fever. *J Exp Med.* 1989;169:269–283.
2. Smoot JC, Barbian KD, Van Gompel JJ, Smoot LM, Chaussee Ms, Slyva GL, Sturdevant DE, Ricklefs SM, Porcella SF, Parkins LD, Beres SB,

- Campbell DS, Smith TM, Zhang Q, Kapur V, Daly JA, Veasy LG, Musser JM. Genome sequence and comparative microarray analysis of serotype M18 group A streptococcus strains associated with acute rheumatic fever outbreaks. *Proc Natl Acad Sci U S A*. 2002;99:4668–4673.
3. Stollerman GH. Rheumatogenic streptococci and autoimmunity. *Clin Immunol Immunopathol*. 1991;61:131–142.
 4. Massell BF, Chute CG, Walker AM, Kurland GS. Penicillin and the marked decrease in morbidity and mortality from rheumatic fever in the United States. *N Engl J Med*. 1988;318:280–286.
 5. Krasuski RA, Bush A, Kay JE, Mayes CE, Wang A, Fleming J, Pierce C, Kisslo KB, Harrison JK, Bashore TM. C-reactive protein elevation independently influences the procedural success of percutaneous balloon mitral valve commissurotomy. *Am Heart J*. 2003;146:1099–2104.
 6. Tolstrup K, Roldan CA, Qualls CR, Crawford MH. Aortic valve sclerosis, mitral annular calcium, and aortic root sclerosis as markers of atherosclerosis in men. *Am J Cardiol*. 2002;89:1030–1034.
 7. Carabello BA, Grossman W. Calculation of stenotic valve orifice area. In: Baim DS, Grossman W. *Grossman's Cardiac Catheterization, Angiography, and Intervention*. 6th ed. Philadelphia, Pa: Lippincott Williams & Wilkins; 2000.
 8. Heller SJ, Carleton RA. Abnormal left ventricular contraction in patients with mitral stenosis. *Circulation*. 1970;42:1099–1119.
 9. Mohan JC, Khalilullah M, Arora R. Left ventricular intrinsic contractility in pure rheumatic mitral stenosis. *Am J Cardiol*. 1989;64:240–242.
 10. Hildner FJ, Javier RP, Cohen LS, Samet P, Nathan MJ, Yahr WZ, Greenberg JJ. Myocardial dysfunction associated with valvular heart disease. *Am J Cardiol*. 1972;30:319–326.
 11. Gash AK, Carabello BA, Cepin D, Spann JF. Left ventricular ejection performance and systolic muscle function in patients with mitral stenosis. *Circulation*. 1983;67:148–154.
 12. Runco V, Levin HS, Vahabzadeh H, Booth RW. Basal diastolic murmurs in rheumatic heart disease: intracardiac phonocardiography and cineangiography. *Am Heart J*. 1968;75:153–161.
 13. Runco V, Molnar W, Meckstroth CV, Ryan JM. The Graham Steell murmur versus aortic regurgitation in rheumatic heart disease: results of aortic valvulography. *Am J Med*. 1961;31:71–80.
 14. Martin RP, Rakowski H, Kleinman JH. Reliability and reproducibility of two-dimensional echocardiographic measurement of the stenotic mitral valve orifice area. *Am J Cardiol*. 1979;43:560–568.
 15. Hatle L, Brubakk A, Tromsdal A, Angelsen B. Noninvasive assessment of pressure drop in mitral stenosis by Doppler ultrasound. *Br Heart J*. 1978;40:131–140.
 16. Hatle L, Angelsen B, Tromsdal A. Noninvasive assessment of atrioventricular pressure half-time by Doppler ultrasound. *Circulation*. 1979;60:1096–1104.
 17. Currie PJ, Seward JB, Chan KL, Fyfe DA, Hagler DJ, Mair DD, Reeder GS, Nishimura RA, Tajik AJ. Continuous wave Doppler determination of right ventricular pressure: a simultaneous Doppler catheterization study in 127 patients. *J Am Coll Cardiol*. 1985;6:750–756.
 18. Gorlin R, Gorlin SG. Hydraulic formula for calculation of area of the stenotic mitral valve, other cardiac valves, and central circulatory shunts, I. *Am Heart J*. 1951;41:1.
 19. Lange RA, Moore DM, Cigarroa RG, Hillis LD. Use of pulmonary capillary wedge pressure to assess severity of mitral stenosis: is true left atrial pressure needed in this condition? *J Am Coll Cardiol*. 1989;13:825–831.
 20. Dalen JE, Matloff JM, Evans GL, Hoppin FG Jr, Bhardwaj P, Harken DE, Dexter L. Early reduction of pulmonary vascular resistance after mitral-valve replacement. *N Engl J Med*. 1967;277:387–394.
 21. Mahoney PD, Loh E, Blitz LR, Herrmann HC. Hemodynamic effects of inhaled nitric oxide in women with mitral stenosis and pulmonary hypertension. *Am J Cardiol*. 2001;87:188–192.
 22. Deverall PB, Olley PM, Smith DR, Watson DA, Whitaker W. Incidence of systemic embolism before and after mitral valvotomy. *Thorax*. 1968;23:530–536.
 23. Schumacher B, Luderitz B. Rate issues in atrial fibrillation: consequences of tachycardia and therapy for rate control. *Am J Cardiol*. 1998;82:29N–36N.
 24. Reyes VP, Raju BS, Wynne J, Stephenson LW, Raju R, Fromm BS, Rajagopal P, Mehta P, Singh S, Rao DP. Percutaneous balloon valvuloplasty compared with open surgical commissurotomy for mitral stenosis. *N Engl J Med*. 1994;331:961–967.
 25. Ben Farhat M, Ayari M, Maatouk F, Betbout F, Gamra H, Jarra M, Tiss M, Hammami S, Thaalbi R, Addad F. Percutaneous balloon versus surgical closed and open mitral commissurotomy: seven-year follow-up results of a randomized trial. *Circulation*. 1998;97:245–250.
 26. Cardoso LF, Grinberg M, Rati MA, Pomerantzeff PM, Medeiros CC, Tarasoutchi F, Martinez E. Comparison between percutaneous balloon valvuloplasty and open commissurotomy for mitral stenosis: a prospective and randomized study. *Cardiology*. 2002;98:186–190.
 27. Roy SB, Gopinath N. Mitral stenosis. *Circulation*. 1968;38(suppl):68–76.
 28. Vincens JJ, Temizer D, Post JR, Edmunds LH Jr, Herrmann HC. Long-term outcome of cardiac surgery in patients with mitral stenosis and severe pulmonary hypertension. *Circulation*. 1995;92(suppl):II-137–II-142.
 29. Kang DH, Park SW, Song JK, Kim HS, Hong MK, Kim JJ, Park SJ. Long-term clinical and echocardiographic outcome of percutaneous mitral valvuloplasty: randomized comparison of Inoue and double balloon techniques. *J Am Coll Cardiol*. 2000;35:169–175.
 30. Palacios IF, Sanchez PL, Harrell LC, Weyman AE, Block PC. Which patients benefit from percutaneous mitral balloon valvuloplasty? Prevalvuloplasty and postvalvuloplasty variables predict long-term outcome. *Circulation*. 2002;105:1465–1471.
 31. Ben-Farhat M, Betbout F, Gamra H, Maatouk F, Ben-Hamda K, Abdell M, Hammami S, Jarrar M, Addad F, Dridi Z. Predictors of long-term event-free survival and of freedom from restenosis after percutaneous balloon mitral commissurotomy. *Am Heart J*. 2001;142:1072–1079.
 32. Cribier A, Eltchaninoff H, Koning R, Rath PC, Arora R, Imam A, El-Sayed M, Dani S, Derumeaux G, Benichou J, Tron C, Janorkar S, Pontier G, Letac B. Percutaneous mechanical mitral commissurotomy with a newly designed metallic valvulotome: immediate results of the initial experience in 153 patients. *Circulation*. 1999;99:793–799.
 33. Wilkins GT, Weyman AE, Abascal VM, Block PC, Palacios IF. Percutaneous balloon dilatation of the mitral valve: an analysis of echocardiographic variables related to outcome and the mechanism of dilation. *Br Heart J*. 1988;60:299–308.
 34. Reid CL, Otto CM, Davis KB, Labovitz A, Kisslo KB, McKay CR. Influence of mitral valve morphology on mitral balloon commissurotomy: immediate and six-month results from the NHLBI Balloon Valvuloplasty Registry. *Am Heart J*. 1992;124:657–665.
 35. Jamieson WR, Edwards FH, Schwartz M, Bero JW, Clark RE, Grover FL, for the Database Committee of the Society of Thoracic Surgeons. Risk stratification for cardiac valve replacement: National Cardiac Surgery Database. *Ann Thorac Surg*. 1999;67:943–951.
 36. Krasuski RA, Assar MD, Wang A, Kisslo KB, Pierce C, Harrison JK, Bashore TM. Usefulness of percutaneous balloon mitral commissurotomy in preventing the development of atrial fibrillation in patients with mitral stenosis. *Am J Cardiol*. 2004;93:936–939.
 37. Chen MC, Wu CJ, Chang HW, Yip HK, Chen YH, Cheng CI, Chai HT. Mechanism of reducing platelet activity by percutaneous transluminal mitral valvuloplasty in patients with rheumatic mitral stenosis. *Chest*. 2004;125:1629–1634.
 38. Atak R, Turhan H, Senen K, Yalta K, Ayaz S, Alyan O, Basar N, Demirkan D. Relationship between control of ventricular rate in atrial fibrillation and systemic coagulation activation in patients with mitral stenosis. *J Heart Valve Dis*. 2004;13:159–164.
 39. Subbarao KS, Nachiappan M, Irineu AP. Transventricular mitral commissurotomy in critical mitral stenosis during pregnancy. *Asian Cardiovasc Thorac Ann*. 2004;12:233–235.
 40. Gash AK, Carabello BA, Kent RL, Frazier JA, Spann JF. Left ventricular performance in patients with coexistent mitral stenosis and aortic insufficiency. *J Am Coll Cardiol*. 1984;3:703–711.
 41. Gillinov AM, Blackstone EH, Cosgrove DM III, White J, Kerr P, Marullo A, McCarthy PM, Lytle BW. Mitral valve repair with aortic valve replacement is superior to double valve replacement. *J Thorac Cardiovasc Surg*. 2003;125:1372–1387.
 42. Skudicky D, Essop MR, Sareli P. Efficacy of mitral balloon valvotomy in reducing the severity of associated tricuspid valve regurgitation. *Am J Cardiol*. 1994;73:209–211.

KEY WORDS: mitral valve stenosis ■ disease management ■ heart valve diseases